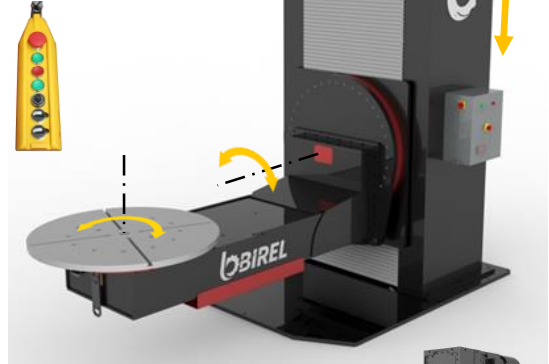


Description

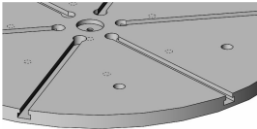


Up & Down
By Hydraulic
Movement

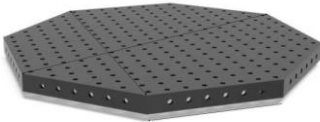


OPTIONAL Modifications & Equipments;

M01: Round WorkTable T – grooved
Thick Plate



M02: Octagonal Table



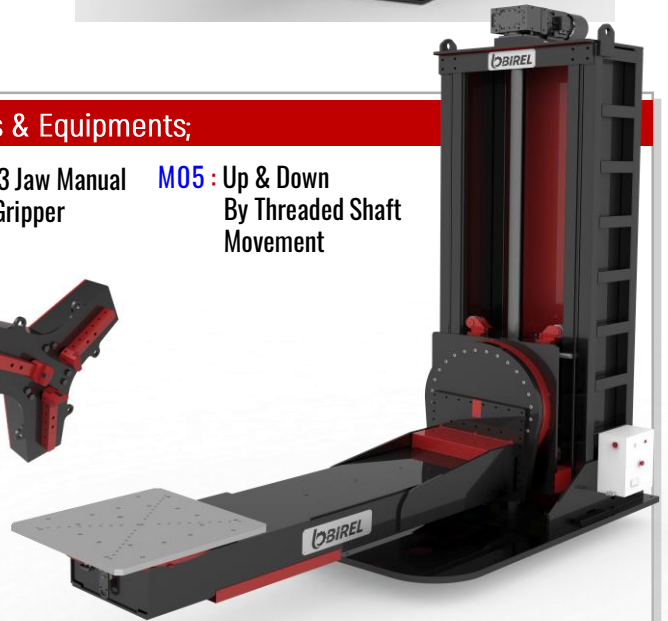
M03: Manual Chuck



M04: 3 Jaw Manual
Pipe Gripper



M05 : Up & Down
By Threaded Shaft
Movement



General Features ;

- BLP-3AX model 3 axis Heavy Duty L-Shape Positioner, Regardless of any geometric shape within dimensions of the machine, In favour of being able to position and generating remarkable welding edges to all workpieces are qualified & ideal solutions. Ensures utmost capability of welding & likewise assembling at 360° degree of any required position .
- Designed in best suitable configuration to perform safe positioning of the workpieces having asymmetry & higher probability of overturn.
- Avoids of crane operations that are part handling, rotating of parts, etc. during production, Provides the opportunity of using operator's working power to use more effectively by minimizing time loss and it increases the efficiency of work.
- BLP-3AX model 3 axis Heavy Duty L-Tye positioner with robust construction & easy controlling ability, Provides the opportunity of comfortable working to operator & improves the quality of welding.
- The operators with BLP-3AX "L" type positioner, At center axis of worktable Workpiece can be precisely rotated over the command control at Clockwise(CW)or Counterclockwise(CCW) at specified speeds.

Technical Advantages ;

- Birel Machinery as standard provides BLP-3AX models in capacities of 1,5 • 3 • 5 • 7,5 • 10 ton.
- In special conditions, Out of these standard capacities, Birel Machinery, according to customer standards & requirements, has the opportunity of manufacturing possibility at different capacities.
- Motor with brake and forced fan cooling.
- Welding Arc Group
- Allow quick connection of workpieces by using " T " slots on worktable (Optional)
- For any special request or project, Please do not hesitate to contact with us.

❖ All technical specifications are subject to change without prior notice.



Standard Features

- Capability of 360 degree worktable rotation.
- Round Worktable with Slots.
- Vertical Hydraulic Lifting of workpiece is presented as standard.
- Adjustable worktable rotation speed & Dijital display.
- 5 mt. Command Cable
- 5 mt.Power Cable
- Brake & Fan Cooled Motor
- Welding Earthing Group
- Standard Machine Colors:
 - Chassis RAL 7011(Grey)
 - Sheet Covers:RAL 3002(Red)
- Power supply :380V -50 Hz. (3 phase)
- One (1) Year Warranty

Optional Control Units

Master Control



Foot Pedal



Overhead hangable



Digital Control

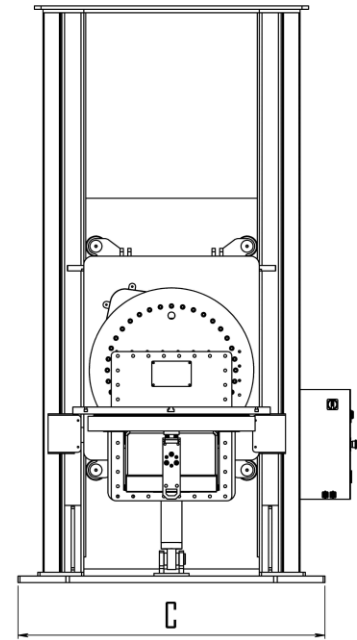
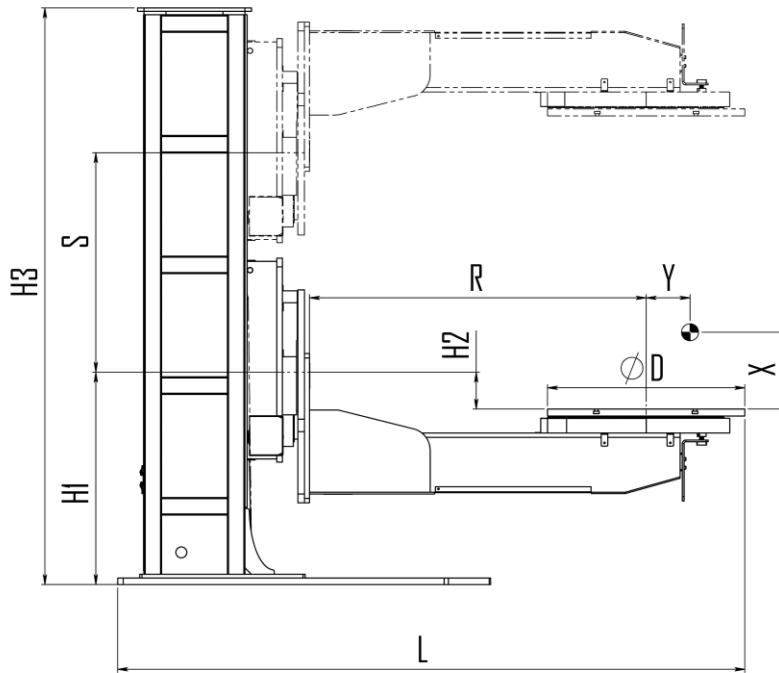


Remote Control



❖ All technical specifications are subject to change without prior notice.

Technical Properties



Technical Details :

Model :BLP-3AX	Sym	Unit	BLP3-3AX
Capacity		kg	3000
Lift Stroke	S	mm	1100
Working Radius	R	mm	1600
Offset Distance	X-Y	mm	300-150
Table Diameter	ØD	mm	1000
Table Torque		Nm	4550
Table Speed		rpm	0,2-1
Tilt Torque		Nm	6900
Tilt Speed		rpm	0,55
Lifting Speed		m/min	0,92
Max.Welding Current	A	Amp	700
Rotating Centre Height	H1	mm	1100
Plate Rotating Centre Difference	H2	mm	100
Total Height	H3	mm	2900
Total Length	L	mm	3150
Total Width	C	mm	1500
Motor Power of Table		kW	0,75
Motor Power of Tilting		kW	0,75
Hydraulic Motor Power of Lifting		kW	1,5

↪ Out of these std. capacities, Birel Machinery, according to customer requirements, has the manufacturing possibility at different capacities, sizes.

❖ All technical specifications are subject to change without prior notice.